

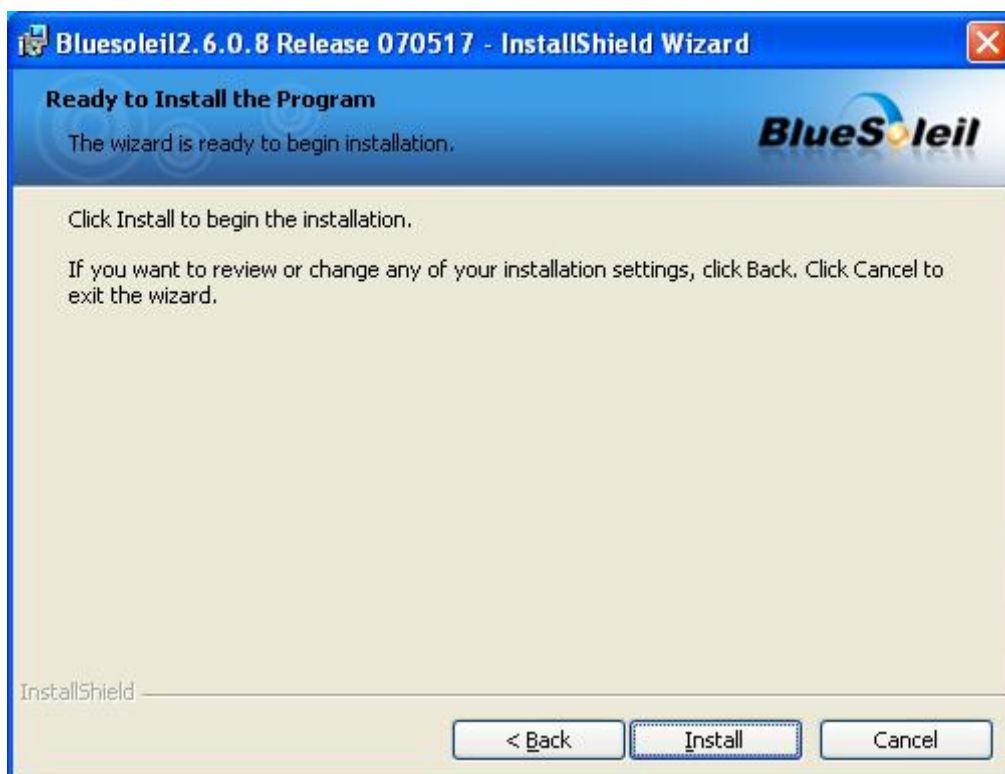
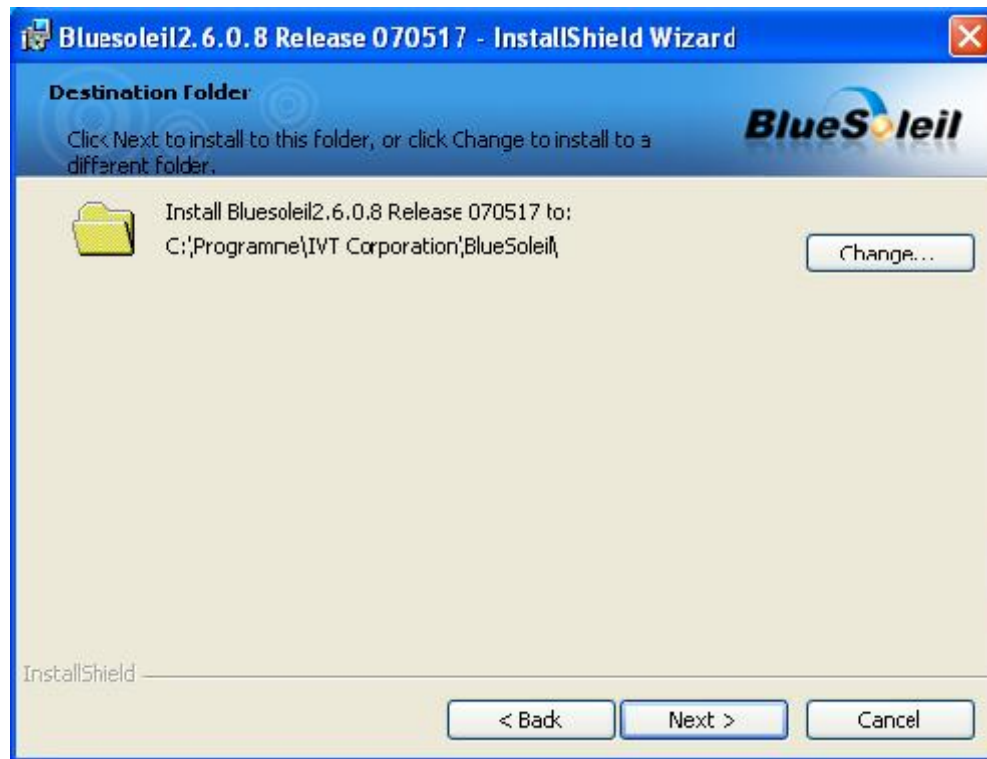
## Installation Tutorial: CTFWIKE-3

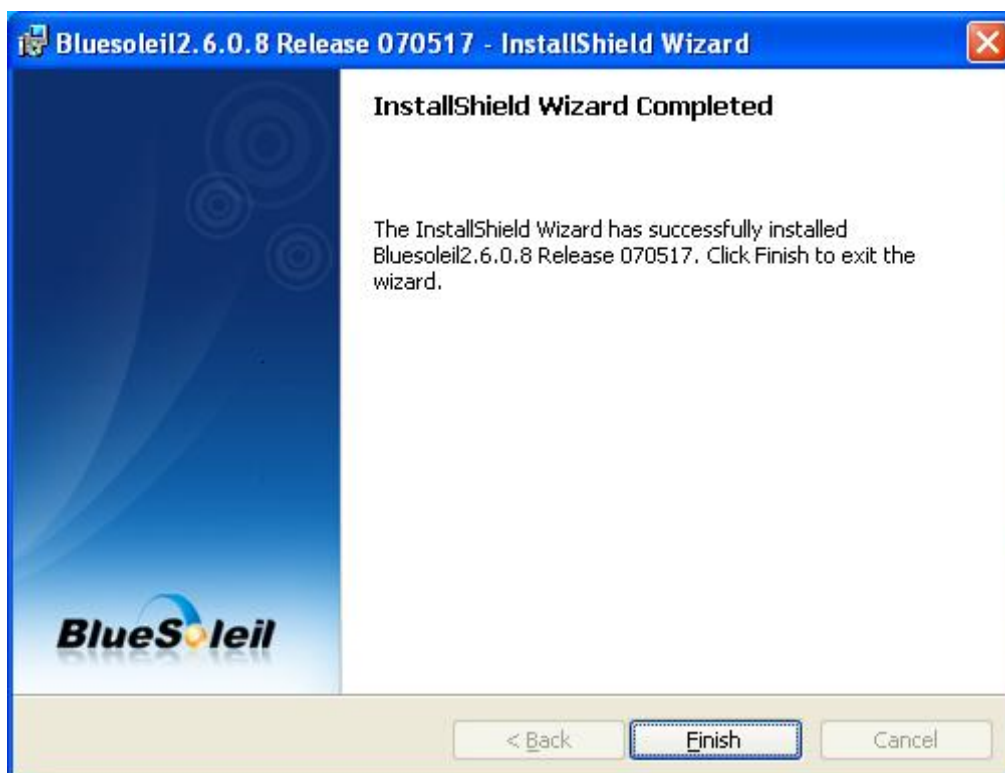
In this example with a BlueSoleil-Bluetooth-USB stick (not included with shipment !)

Connect the USB Dongle to your Computer. Insert the Bluetooth driver CD into your CD Drive and go on as follow



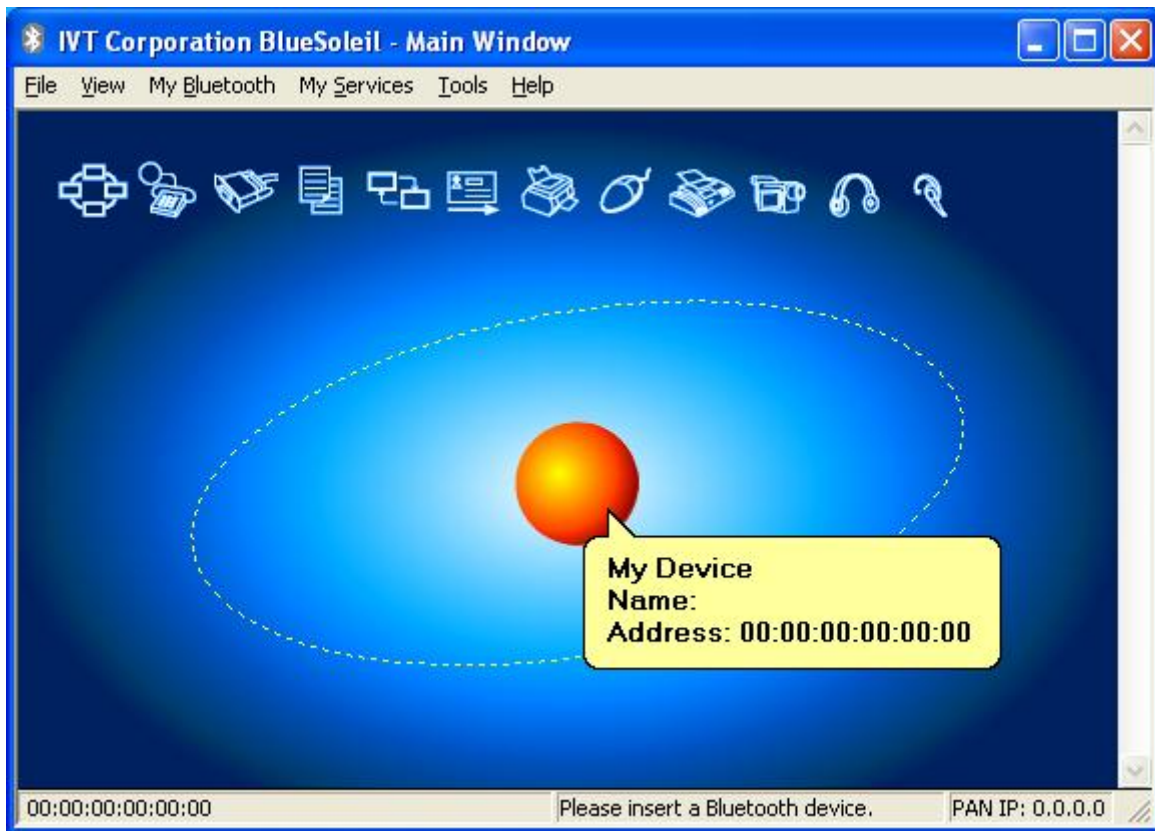






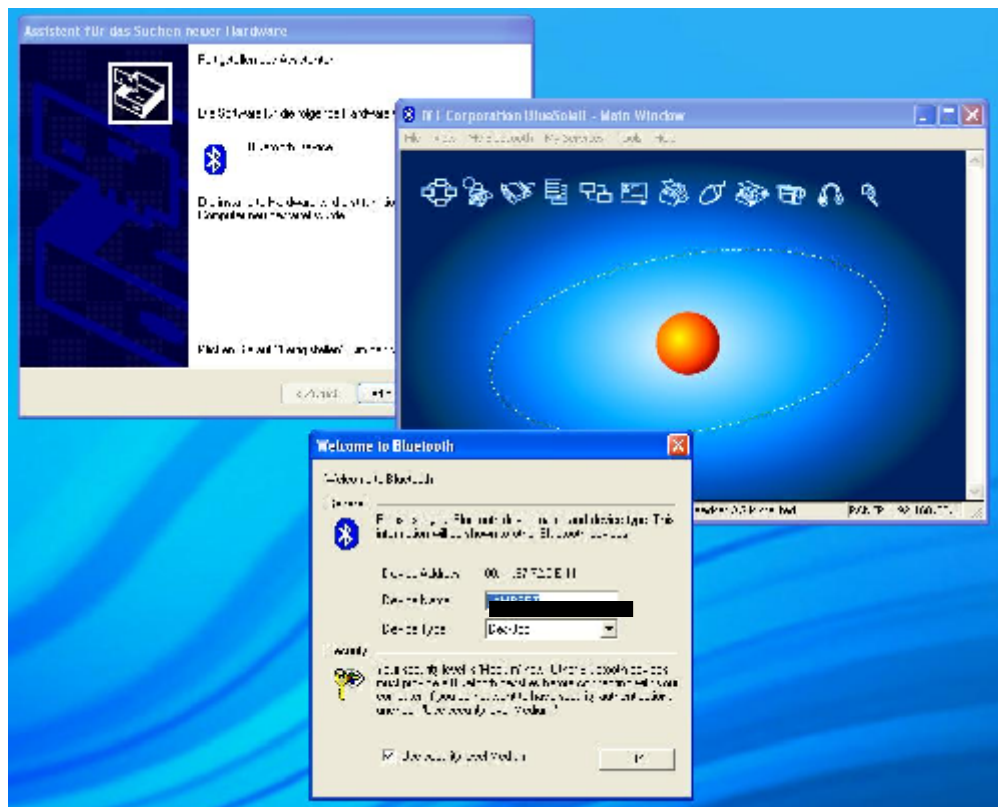
After the installation is finished, you will see the BlueSoleil Shortcut on your desktop and the program will start.

(Maybe, your System asks for a restart. Do this and go on as follow)

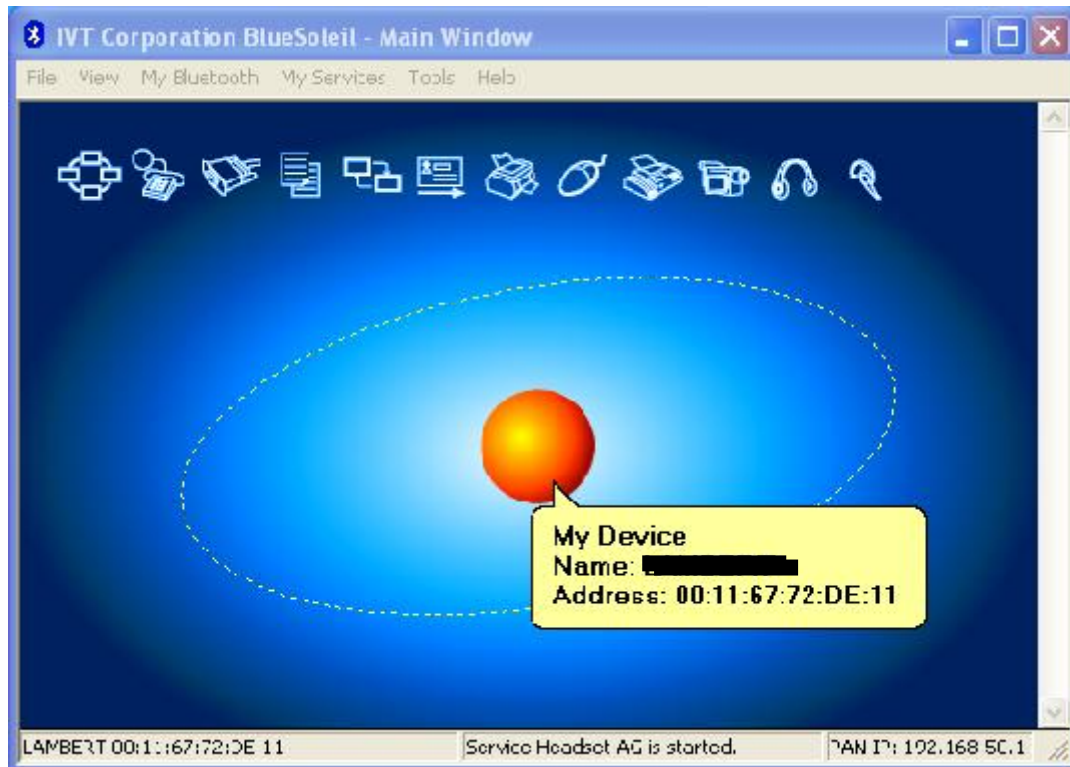


The System should now start to install new Hardware.  
Click the OK-Button on the „Welcome to Bluetooth“-Window and finish the Assistant for new Hardware.

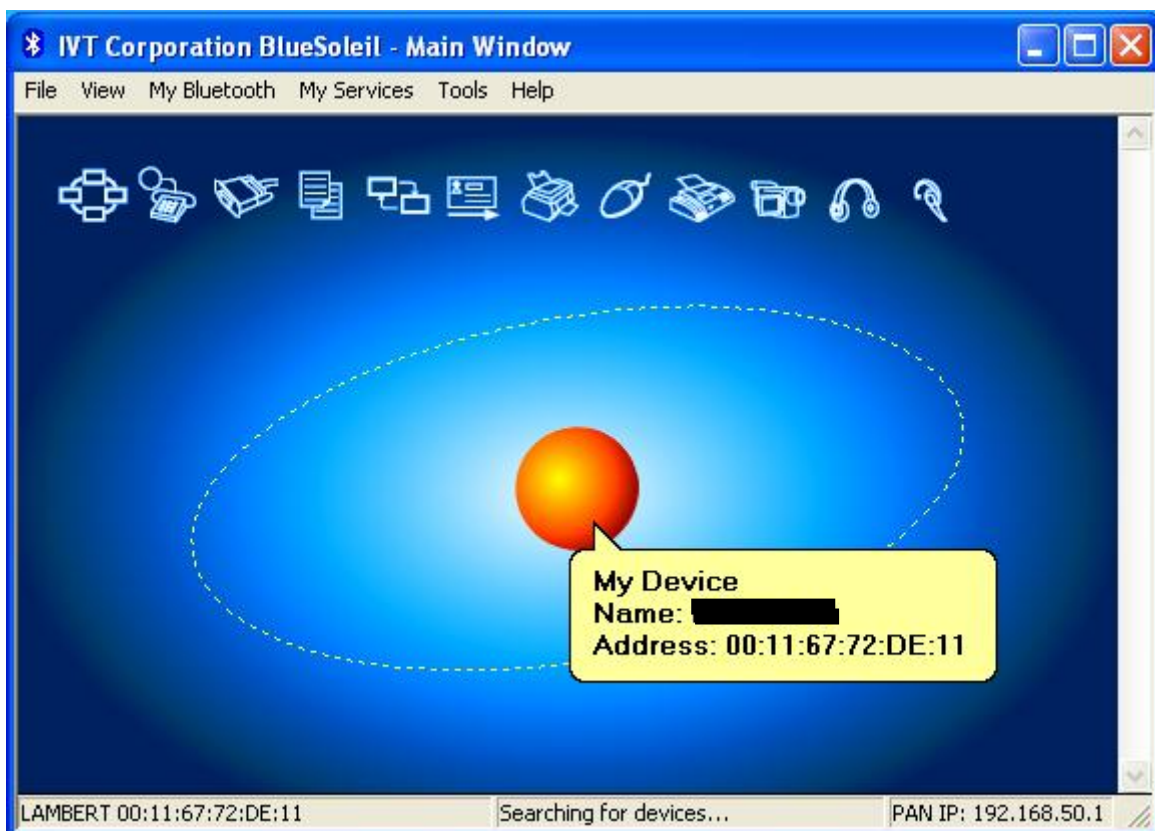
The System has to be restarted again.



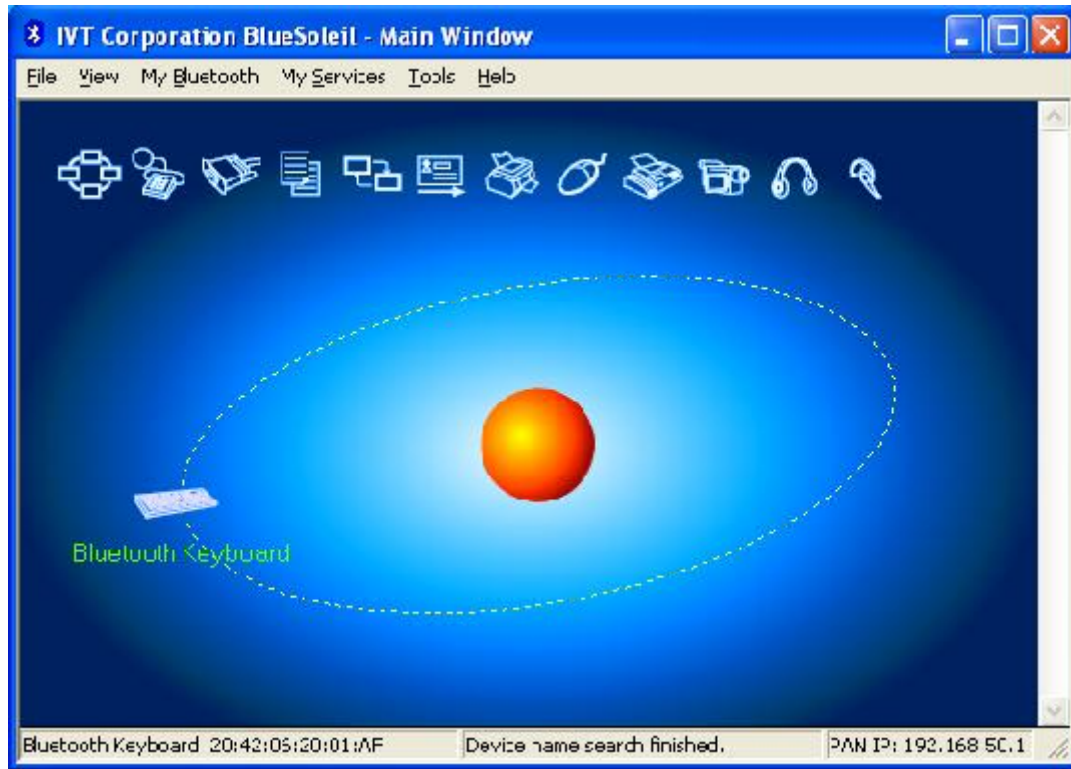
After the Hardware is installed correct, please click on the orange Ball in the middle of the BlueSoleil window to search for devices



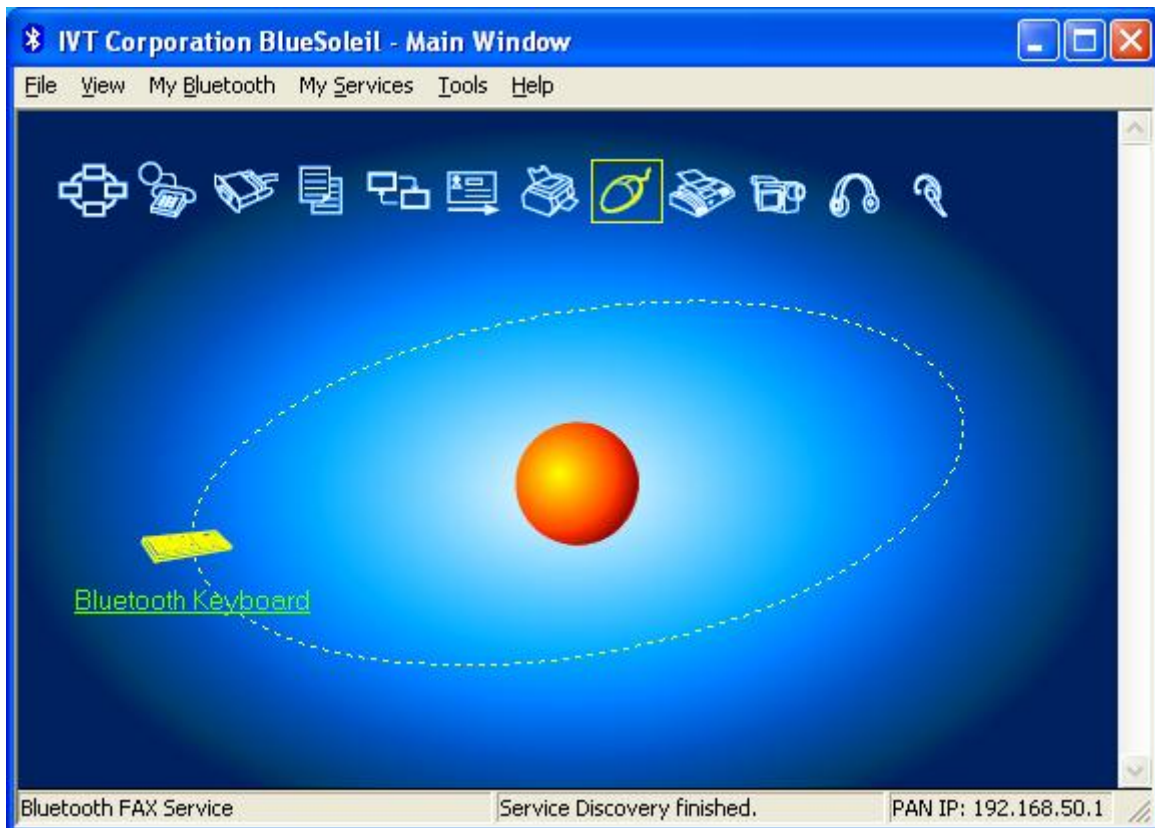
Turn on the CTFWIKE-3 Keyboard on the Backside and press the „ID“ Button (also on the backside)



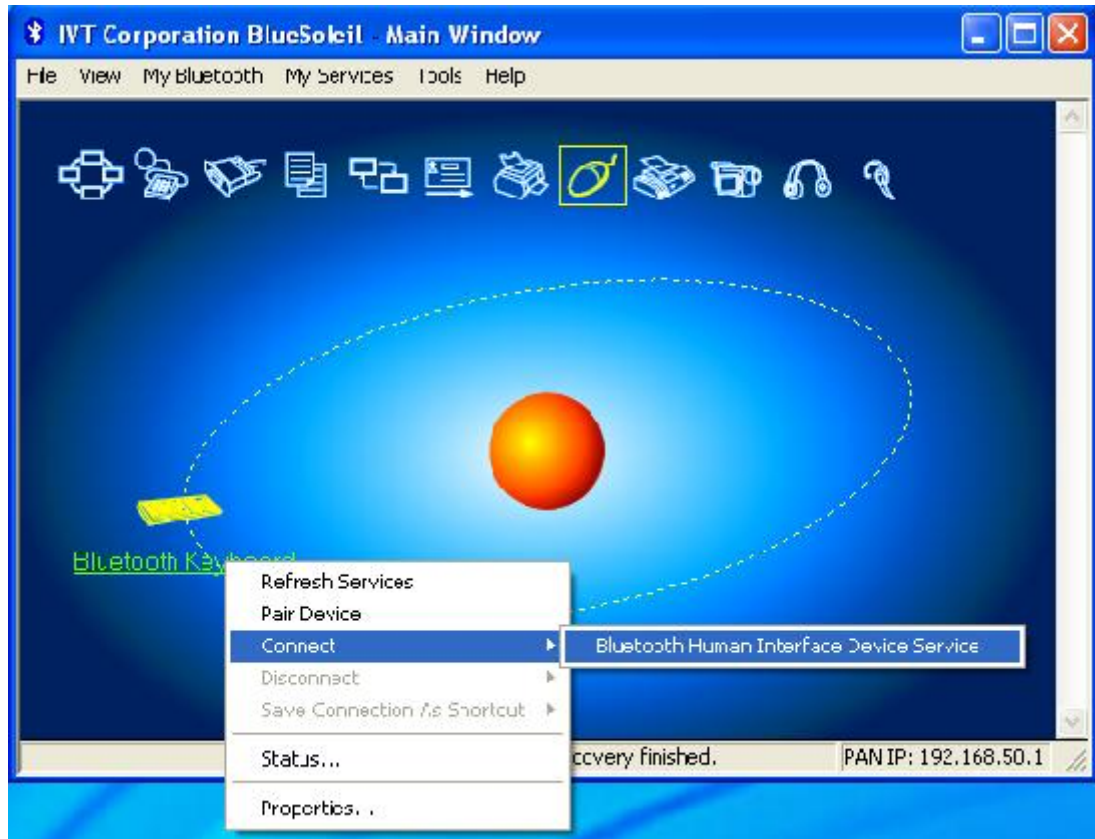
After the device was found, click with right mouse button on the Bluetooth keyboard and choose “connect device” (You can also do this by double click)



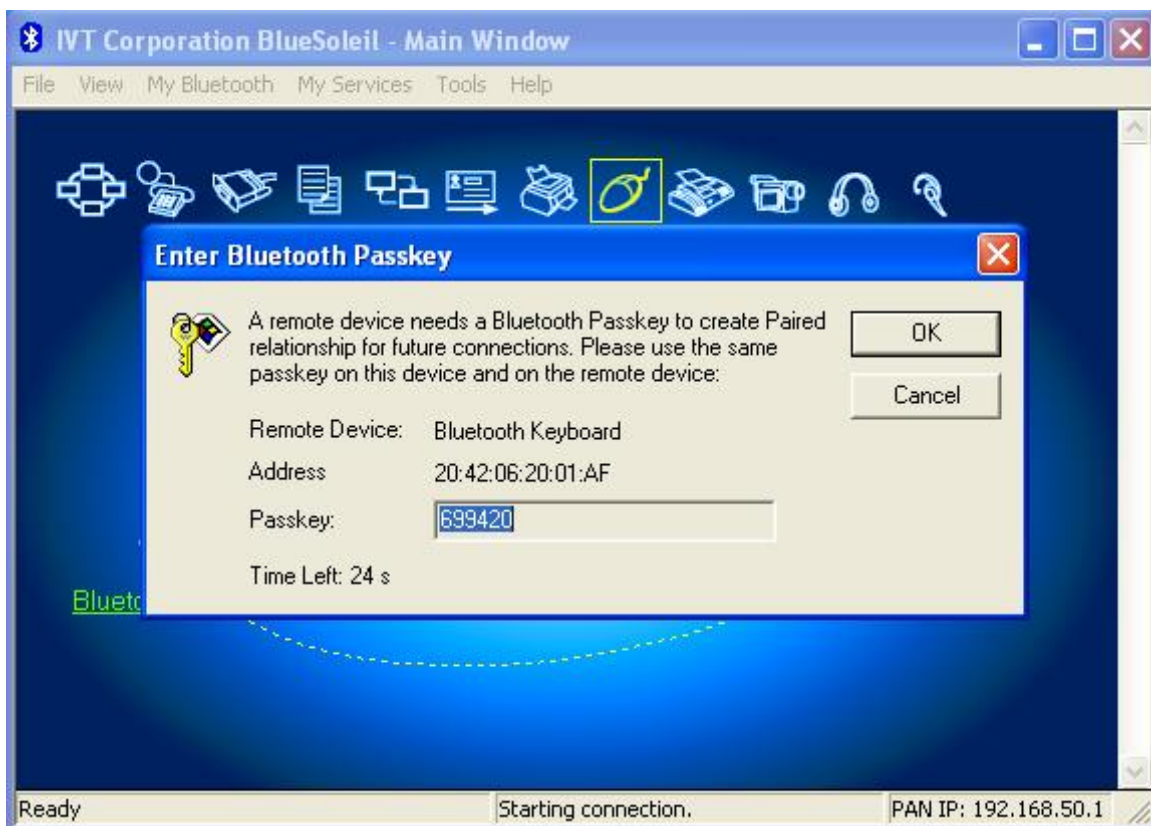
Now, The devices are paired



To use the Keyboard, rightclick on the Keyboard Symbol -> Connect -> Bluetooth Human Interface Device Service



Write the Passkey on your Bluetooth-Keyboard and confirm with „ENTER“



Now you can use your Bluetooth Keyboard.





**CARTFT.COM**  
Shop for mobile  
PC- and GPS-Solutions

Power Up Your Car

